

ZRKI | علم المعمار للهندسة
TECTONICA | تصميم و إدارة مشاريع
DESIGN & PROJECT MANAGEMENT

PORTFOLIO

DESIGN & SUPERVISION

A WORD FROM OUR FOUNDER

Dr. **Maamoun Abdullah Al-Munif**
Founder of **Arkitectonica**



At **ARKITECTONICA**, we take pride in designing and managing landmark projects across the Kingdom, contributing innovative ideas and high-quality architecture to the profession.

Since our founding in 2006, we have embraced a philosophy of true partnership with our clients, guiding every stage of the project to ensure success. This approach has earned the trust of leading companies and investors who rely on us to enhance their investments and achieve lasting value.

Equally, we value the opportunity to design homes that bring comfort and happiness to families—creating healthy, functional, and cost-efficient living environments without compromising on quality.

We sincerely thank our clients, our partners in success, and reaffirm our commitment to continuous growth and to delivering architecture that inspires and endures.

OUR SERVICES

DESIGN & ENGINEERING CONSULTANCY

ARCHITECTURAL DESIGN
INTERIOR DESIGN
CIVIL & STRUCTURAL DESIGN
MECHANICAL & ELECTRICAL DESIGN

PROJECT MANAGEMENT

PROJECT MANAGEMENT & TECHNICAL SYSTEMS

SUPERVISION SUPERVISION & PROJECT MANAGEMENT

DESIGN & ENGINEERING CONSULTANCY

This is where ideas take shape. We transform your vision into a clear and practical plan for the building.

Our approach blends creativity with functionality, ensuring that the design not only looks exceptional but also meets your needs efficiently. The result is a solution that is innovative, sustainable, and something you can truly be proud of.

PROJECT MANAGEMENT

We ensure that every stage of the project is executed on time, within budget, and to the highest quality standards.

Our team coordinates seamlessly among all stakeholders, optimizes resources, and oversees progress to deliver smooth execution from concept to completion.

SUPERVISION

Our supervision services guarantee that both design and construction phases are implemented with precision and compliance.

We supervise on-site progress, manage each project stage, and coordinate with all parties involved to uphold safety, efficiency, and successful project delivery.

GET TO KNOW US

SHAPING OUR PRACTICE

ARKITECTONICA is a multidisciplinary team of architects, engineers, and planners delivering innovative, client-focused solutions. Our mission is to exceed expectations through excellence, precision, and creativity.

We provide comprehensive services ranging from space planning, landscape architecture, and design development to construction management, supervision, and value engineering. Our expertise also extends to real estate feasibility studies and technical and financial evaluations.

Guided by sustainability and cultural context, we craft site-specific designs that balance functionality, identity, and tradition. Every project is approached as a partnership, where our clients' success defines our own.



OUR CLIENTS

PARTNERSHIP & CLIENTS

POTFOLIO - 2026



Our NUMBER ONE priority in everything we do

At **ARKITECTONICA**, our clients always come first. We are dedicated to building relationships where needs, expectations, and strategy guide the context of every project we deliver together. Whatever their size, and wherever they may be, our clients can rely on us to deliver with excellence.

With our talented team of professionals, we transform visions and dreams into reality by combining innovative ideas, creativity, experience, and strong leadership.

Our clients are remarkably diverse—ranging from large corporations to small businesses, from private to public institutions, and from nonprofit to for-profit organizations. We help them grow, sustain, and transform—providing whatever it takes to embrace their future.

OUR EXPERTISE

ARKITECTONICA's expertise lies in bringing together talented architects, outstanding experts, and passionate partners. We encourage our people to share their ideas and innovations while fostering collaboration between architects and engineers. By combining knowledge from diverse disciplines, we ensure architecture is practiced at the highest level of quality.

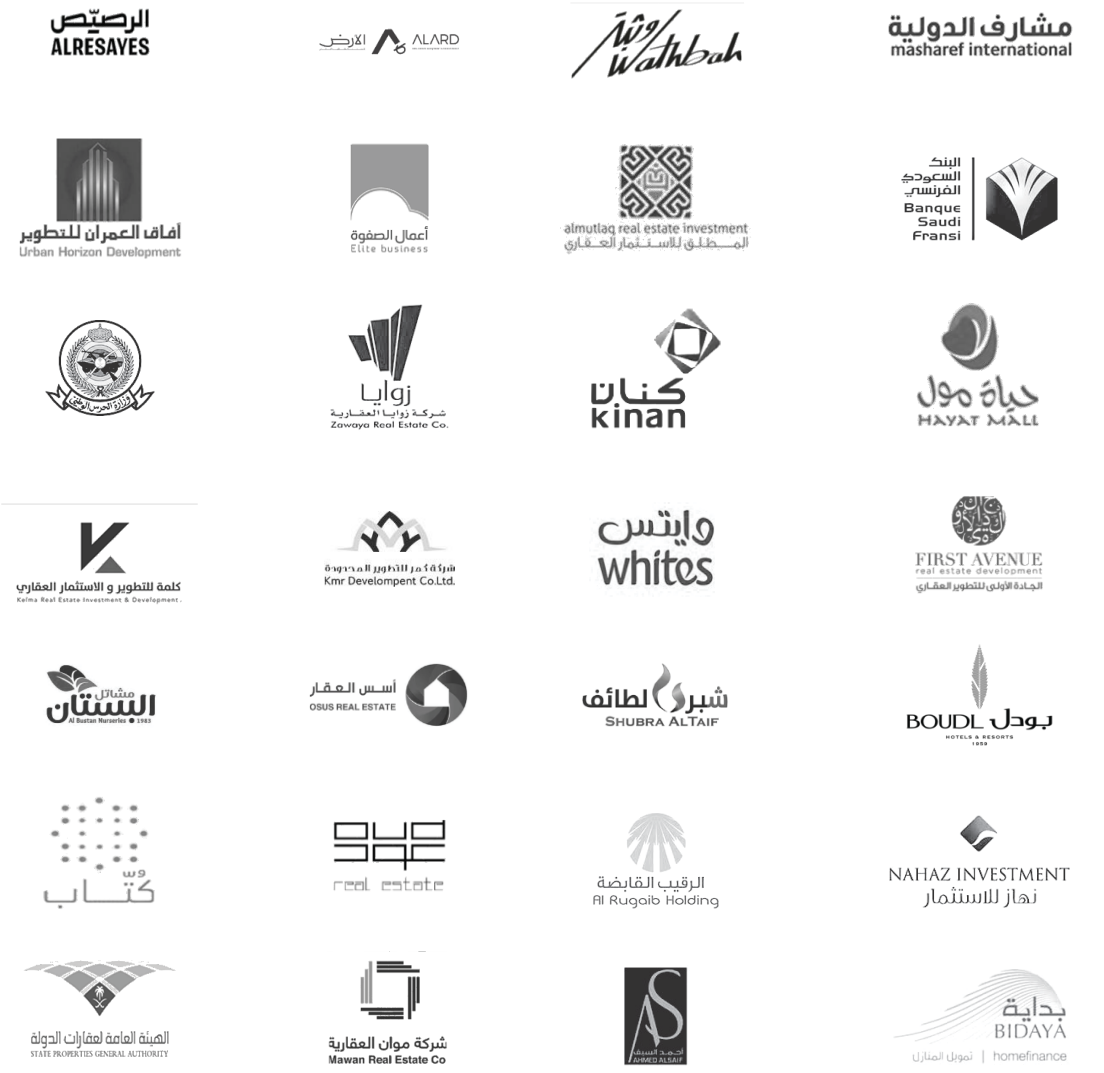
ARKITECTONICA is committed to delivering reliable and professional services of the highest quality. Through the development and implementation of advanced management systems, we create a supportive environment that enhances productivity, accuracy, and creativity. Excellence and innovation remain the core values driving everything we do.

ARKITECTONICA provides comprehensive architectural and engineering services—from concept design to detailed construction plans—along with post-contract on-site supervision.

Our portfolio encompasses world-class projects across commercial, residential, retail, and mixed-use developments, as well as hospitality, leisure, sports, healthcare, education, and urban planning. We also specialize in landscape and interior design. With a streamlined approach, we consistently deliver successful projects on time, reliably and efficiently.

PARTNERSHIP & CLIENTS

POTFOLIO - 2026



ARKITECTONICA

SELECTED WORKS

DESIGN & SUPERVISION

POTFOLIO - 2026

RIYADH - KSA

01 BADAEL TOWER OLAYA ST.

SELECTED WORKS

This residential tower stands out for its slender form and expressive façade composition. Vertical window strips emphasize height and rhythm, while a mid-level glazed band wraps around the building, introducing a dramatic shift in geometry and breaking the mass into two distinct volumes. The warm-toned cladding contrasts with transparent glazing, balancing solidity and openness. Designed as an elegant landmark, the tower combines modern aesthetics with functional residential living, offering a bold presence within the urban skyline.

CLIENT	BADAEL INVESTMENT CO.
LOCATION	RIYADH, AL-SAHAFA
PROGRAM	RESIDENTIAL DEVELOPMENT
AREA	3000 m ²
SCOPE OF WORK	DESIGN & SUPERVISION

RIYADH - KSA



PORTFOLIO - 2026



ARKITECTONICA



RIYADH - KSA



02 BREEZA SQUARE

This mixed-use development is designed as a vibrant urban destination, combining retail, dining, and leisure within a pedestrian-friendly setting. Defined by a linear promenade anchored by a central water feature, the complex creates a dynamic public realm that encourages interaction and community life. Contemporary facades with warm-toned materials and large transparent storefronts establish an elegant yet approachable atmosphere, while landscaped terraces and shaded walkways enhance comfort. The result is a modern lifestyle hub that integrates architecture, nature, and social experience.

CLIENT	AL-RAJHI
LOCATION	RIYADH, AL-NASSEEM
PROGRAM	MIXED USE COMPLEX
AREA	2505 m ²
SCOPE OF WORK	DESIGN

RIYADH - KSA





ARKITECTONICA



RIYADH - KSA

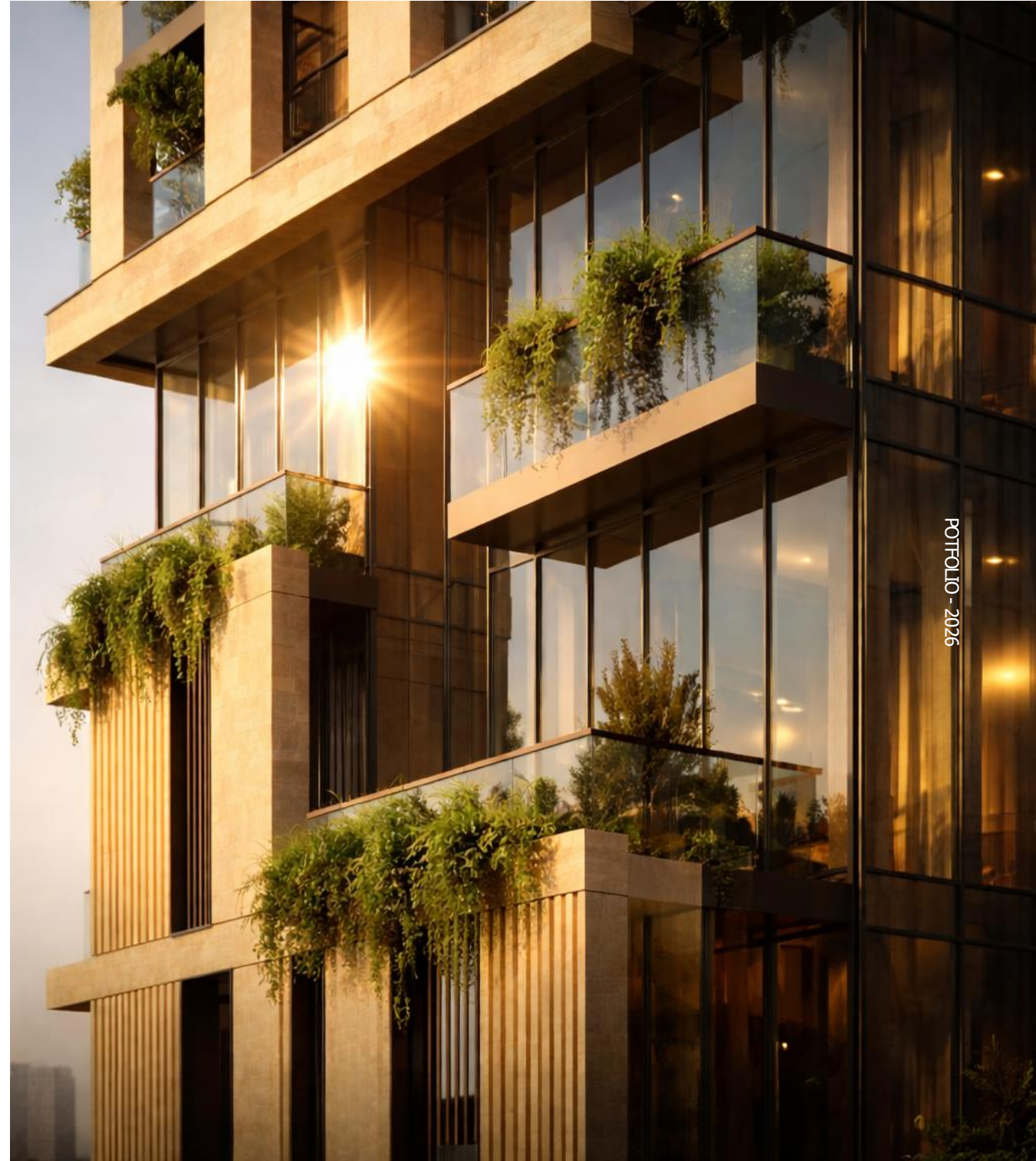


03 BADAEL TOWER

KING FAHAD ST.

This residential tower emphasizes verticality through its slender proportions and refined façade composition. A system of vertical shading fins is integrated into the design, enhancing privacy, reducing solar gain, and adding depth to the elevations. Warm-toned cladding contrasts with recessed openings, creating rhythm and texture while optimizing natural light for interior spaces. The crown is articulated with open frames that lighten the massing and establish a distinctive skyline presence. Designed for urban living, the tower unites sustainability, comfort, and elegance within a modern architectural landmark.

CLIENT	BADAEL INVESTMENT CO.
LOCATION	RIYADH, AL-SAHAFA
PROGRAM	RESIDENTIAL DEVELOPMENT
AREA	3000 m ²
SCOPE OF WORK	DESIGN & SUPERVISION





ARKITECTONICA



RIYADH - KSA



04 HYATT PLACE HOTEL

This hotel is designed as a series of stacked volumes, creating a sculptural landmark that redefines the urban corner. Warm-toned cladding and vertical fins emphasize rhythm and depth, while landscaped terraces and recessed openings bring greenery into the façade. The dynamic massing allows natural light to penetrate deeply while offering shaded outdoor spaces, balancing hospitality comfort with modern architectural expression. At night, the building transforms into a glowing beacon, its illuminated layers enhancing the city's skyline.

CLIENT	MARHABA
LOCATION	RIYADH, KING ABDULAZIZ ROAD
PROGRAM	HOTEL
AREA	2500 m ²
SCOPE OF WORK	DESIGN & SUPERVISION





SELECTED WORKS

RIYADH - KSA



05 BADAEL TOWER

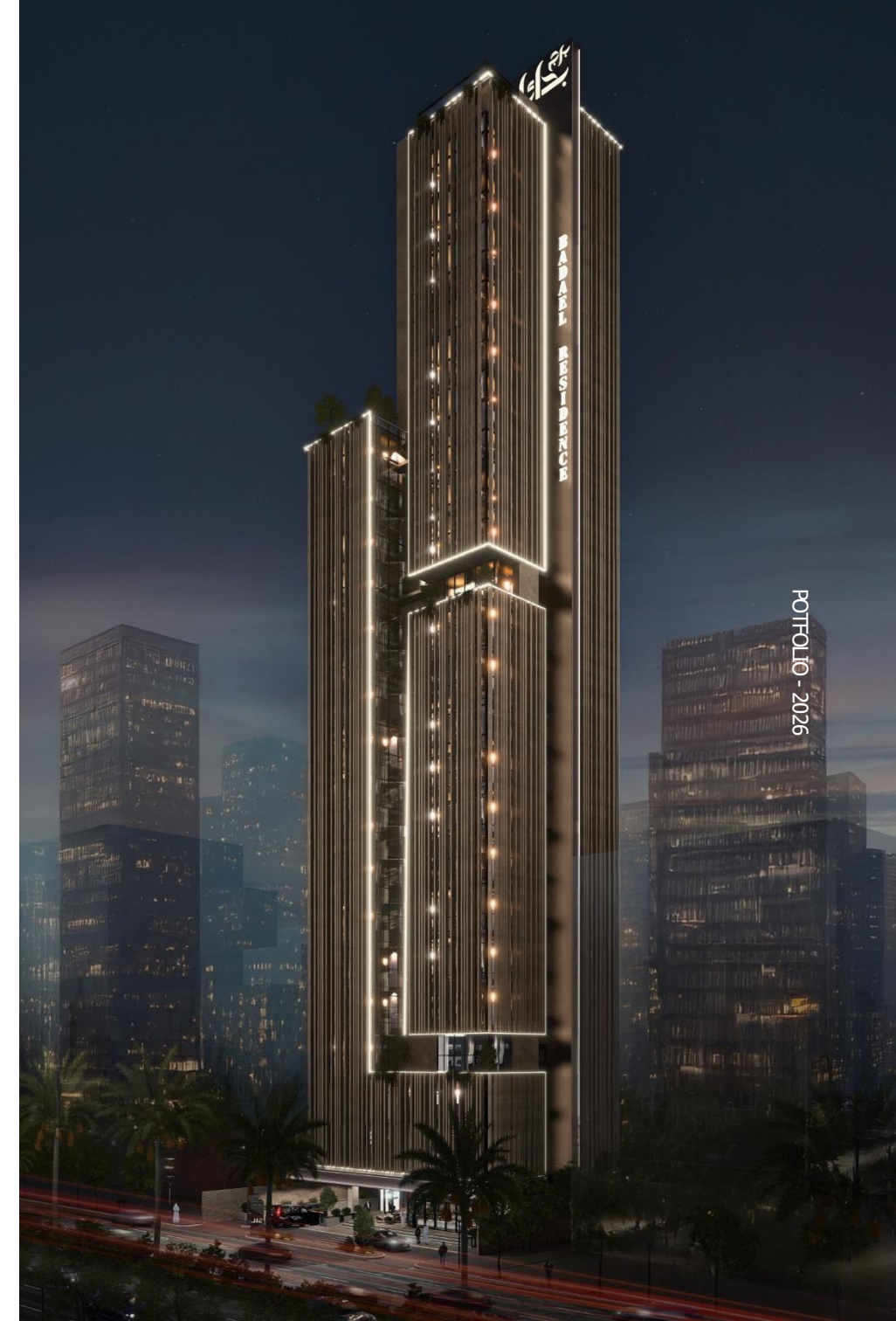
KING FAHAD ST.

SELECTED WORKS

This residential tower emphasizes verticality through its slender proportions and refined façade composition. A system of vertical shading fins is integrated into the design, enhancing privacy, reducing solar gain, and adding depth to the elevations. Warm-toned cladding contrasts with recessed openings, creating rhythm and texture while optimizing natural light for interior spaces. The crown is articulated with open frames that lighten the massing and establish a distinctive skyline presence. Designed for urban living, the tower unites sustainability, comfort, and elegance within a modern architectural landmark.

CLIENT	BADAEL INVESTMENT CO.
LOCATION	RIYADH, AL-SAHAFA
PROGRAM	RESIDENTIAL DEVELOPMENT
AREA	1050 m ²
SCOPE OF WORK	DESIGN & SUPERVISION

RIYADH - KSA



PORTFOLIO - 2026



ARKITECTONICA



RIYADH - KSA



06 CENTURY CORNER

This mall is designed as a contemporary retail and leisure destination, characterized by its bold sculptural façade and perforated panels that filter light and create a dynamic urban identity. The interior is organized around generous atriums and open-air courtyards, integrating shopping, dining, and social experiences in a seamless flow. Elevated terraces and transparent storefronts enhance visibility and engagement, while the architectural language of sharp angles and fluid forms establishes the mall as a landmark of modern commercial design.

CLIENT	RAKAA HOLDING
LOCATION	RIYADH, KING FAHD ROAD
PROGRAM	MIXED USE COMPLEX
AREA	14912 m ²
SCOPE OF WORK	DESIGN & SUPERVISION

RIYADH - KSA





07 OLAYA TOWER

SELECTED WORKS

This office building is defined by its dynamic composition of glass and stone, creating a strong architectural identity within the urban context. The sharply angled glass façade conveys transparency and innovation, while the flanking stone walls provide solidity and permanence. The interplay of these contrasting materials enhances both performance and aesthetics, optimizing natural light while ensuring thermal efficiency. Its sculptural form establishes the building as a modern corporate landmark that reflects confidence and progress.

CLIENT	NOURA AL-HARQAN
LOCATION	RIYADH, AL-SHAFA, OLAYA STREET
PROGRAM	OFFICE COMPLEX
AREA	1600 m ²
SCOPE OF WORK	DESIGN & SUPERVISION

RIYADH - KSA



POTFOLIO - 2026



ARKITECTONICA



RIYADH - KSA

08 KHALED TOWER

SELECTED WORKS

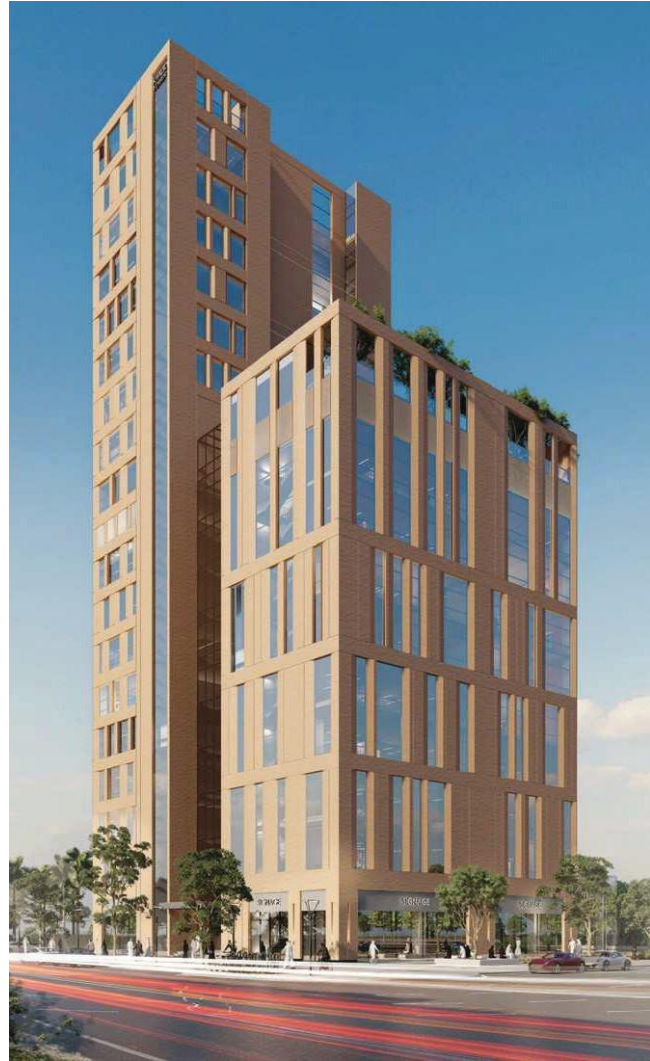
This office tower is defined by its slender vertical massing and a warm-toned façade that balances solidity with transparency. Large glazed openings framed by structured gridlines create rhythm and clarity, while double-height retail at the ground level activates the street and fosters urban vibrancy. Green terraces at upper levels introduce a natural layer, enhancing the work environment and reflecting a contemporary approach to sustainable office design.

CLIENT	KHALED BIN KRAIDEES
LOCATION	RIYADH, AL-MALQA
PROGRAM	OFFICES & SHOWROOMS DEVELOPMENT
AREA	3707 m ²
SCOPE OF WORK	DESIGN

RIYADH - KSA



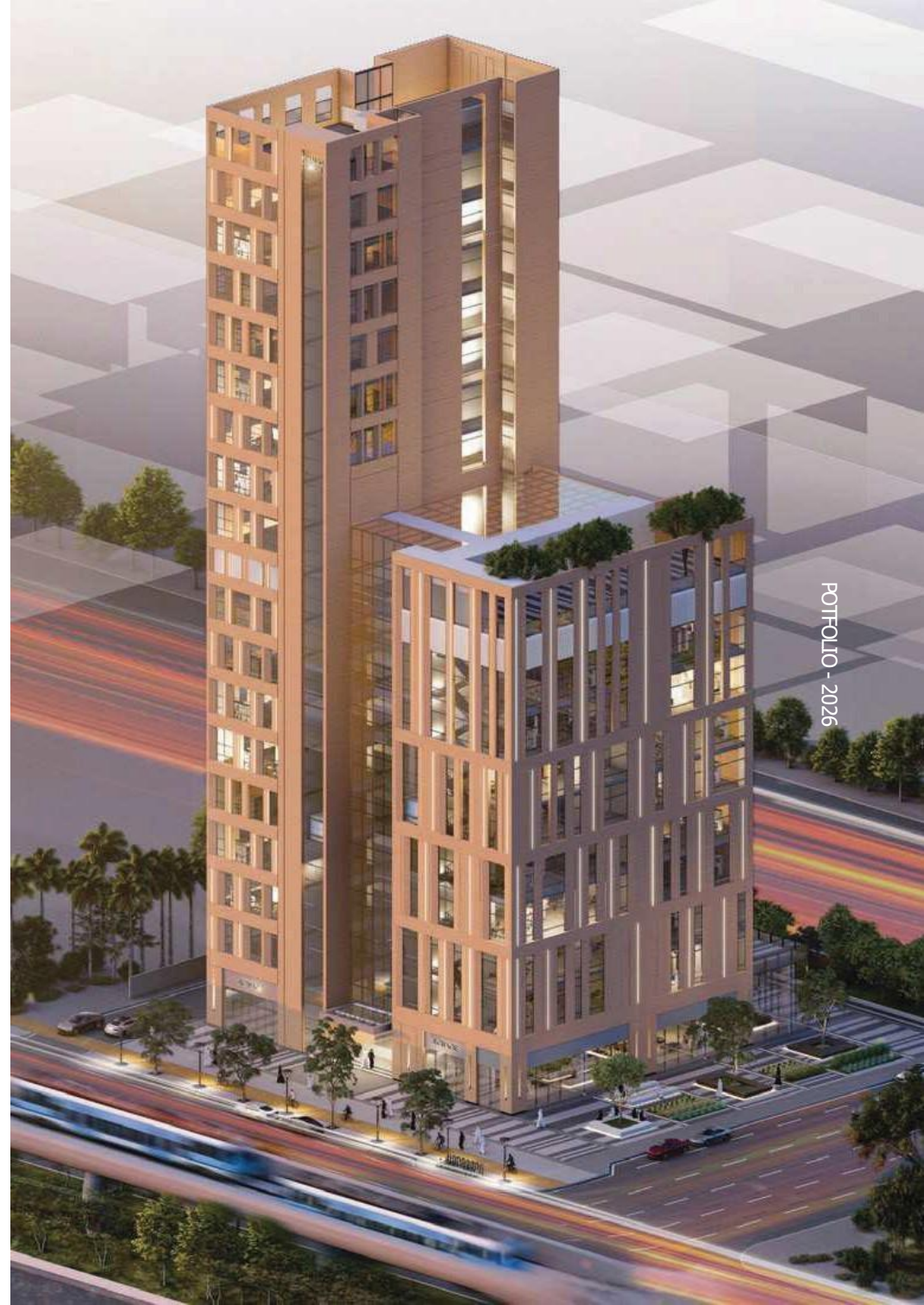
PORTFOLIO - 2026



ARKITECTONICA



RIYADH - KSA



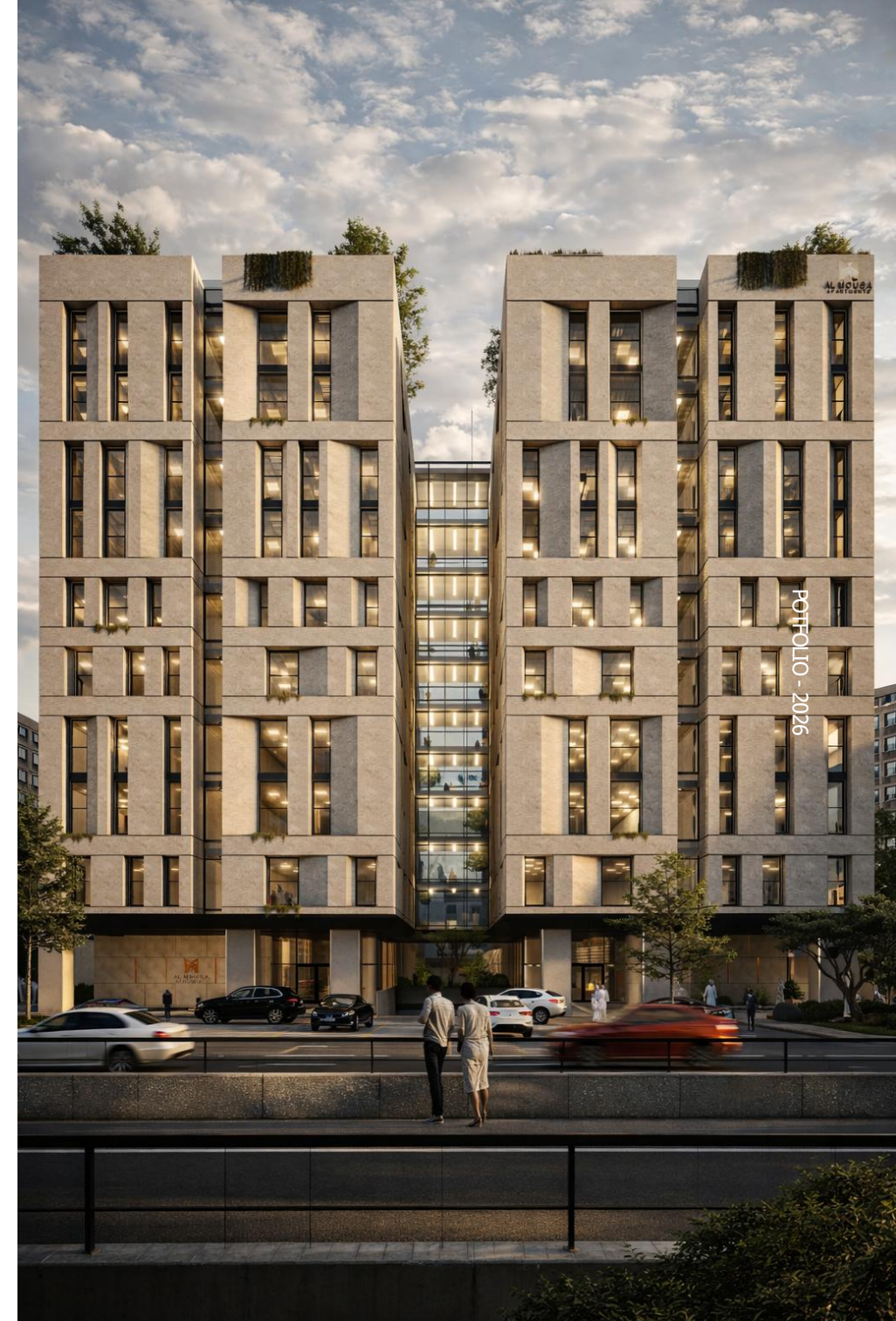
09 AL MOUSA APARTMENTS

This residential development is defined by its bold vertical articulation and rhythmic façade composition. The interplay of recessed openings and solid frames creates depth and texture, while a central void emphasizes balance and symmetry. Warm materials and carefully integrated lighting enhance the building's identity, transforming it into a welcoming landmark by day and an elegant beacon at night. Rooftop terraces and green pockets provide residents with private outdoor retreats, combining urban living with comfort and lifestyle.

SELECTED WORKS

CLIENT	AL-MOUSA REAL ESTATE
LOCATION	RIYADH – AD DUHBAT
PROGRAM	RESIDENTIAL DEVELOPMENT
AREA	2500 m ²
SCOPE OF WORK	DESIGN & SUPERVISION

RIYADH - KSA





ARKITEKTONICA



ZRKI
TEKTONICA

RIYADH - KSA

10 RAFA TOWER

SELECTED WORKS

This residential tower is characterized by its fluid, curving façade that creates a sense of movement and elegance within the urban skyline. Horizontal balcony bands alternate with dark glazed surfaces, emphasizing rhythm while providing each unit with outdoor living space and natural light. At the crown, a sculpted form with integrated greenery defines the building's silhouette, transforming it into a distinctive landmark. The design balances modern aesthetics with residential comfort, offering a refined vertical living experience.

CLIENT	OSOS REAL ESTATE
LOCATION	RIYADH, AL-SHAFA
PROGRAM	RESIDENTIAL COMPLEX
AREA	900 m ²
SCOPE OF WORK	DESIGN & SUPERVISION

RIYADH - KSA



PORTFOLIO - 2026

ARKITECTONICA



RIYADH - KSA



11 JOY AVENUE

This development is envisioned as a lively urban destination combining retail, leisure, and entertainment. Anchored by a supermarket and cinema, the complex integrates restaurants and retail units around a central public plaza defined by landscaped walkways and water features. The curved building forms embrace the open space, creating a pedestrian-friendly environment that fosters social interaction. Contemporary façades with flowing lines give the project a modern identity, while the spatial layout ensures visibility, accessibility, and vibrant day-to-night activity.

CLIENT	AL-MUTLAQ GROUP
LOCATION	RIYADH, AL-SAADAH
PROGRAM	MIXED USE COMPLEX
AREA	38027 m ²
SCOPE OF WORK	DESIGN & SUPERVISION



ARKITECTONICA



SELECTED WORKS



RIYADH - KSA

POTFOLIO - 2026

12 AL-RAJHI TOWER

SELECTED WORKS

CLIENT	AL-RAJHI
LOCATION	RIYADH, AL-KHALEEJ
PROGRAM	RESIDENTIAL COMPLEX
AREA	1914 m ²
SCOPE OF WORK	DESIGN

RIYADH - KSA



POTFOLIO - 2026



This residential tower exemplifies contemporary urban living, designed with a strong emphasis on vertical rhythm and façade articulation. The building's linear geometry is softened by recessed balconies and vertical fins, creating depth, texture, and dynamic shadow play throughout the day.

At the podium level, a transparent ground floor accommodates retail and communal amenities, enhancing street-level engagement and activating the public realm. Above, the tower rises with a repetitive yet refined grid system, punctuated by strategically placed openings and terraces that break the monotony while offering residents generous outdoor spaces.



Functionally, the project is designed to optimize density while ensuring comfort, privacy, and natural light for all units. Landscaped terraces and vertical green elements are integrated at the upper levels, providing residents with elevated garden experiences and contributing to environmental sustainability.

13 ABO BAKER BUSINESS GATE

SELECTED WORKS

This development combines retail, dining, and office spaces within a compact and elegant design. A central grand staircase anchors the composition, guiding visitors to upper-level terraces and office entries while activating the public realm. The ground floor opens to the street with transparent façades for shops and restaurants, creating vibrancy and accessibility. Upper levels integrate greenery and shaded terraces, offering elevated dining and work experiences in a modern, community-focused environment.

CLIENT	TALAE AL NUMU
LOCATION	RIYADH, AL-NARJIS
PROGRAM	MIXED USE COMPLEX
AREA	2363 m ²
SCOPE OF WORK	DESIGN & SUPERVISION

RIYADH - KSA





14 DOUBLE TWO

This development blends retail and office functions within a refined architectural framework. The ground floor is dedicated to retail, activating the street with transparent façades and pedestrian-friendly access, while upper levels provide flexible, light-filled office spaces. The composition is organized around a central plaza with landscaped seating and water features, creating a welcoming social hub. A modern material palette of stone, glass, and metal accents reinforces the project's identity as a contemporary urban destination.

CLIENT	AL-DOHIAN REAL ESTATE
LOCATION	RIYADH, ANAS IBN MALIK ST.
PROGRAM	MIXED USE COMPLEX
AREA	12652 m ²
SCOPE OF WORK	DESIGN & SUPERVISION

RIYADH - KSA





15 AWQAF HESSA BUSINESS HUB

SELECTED WORKS

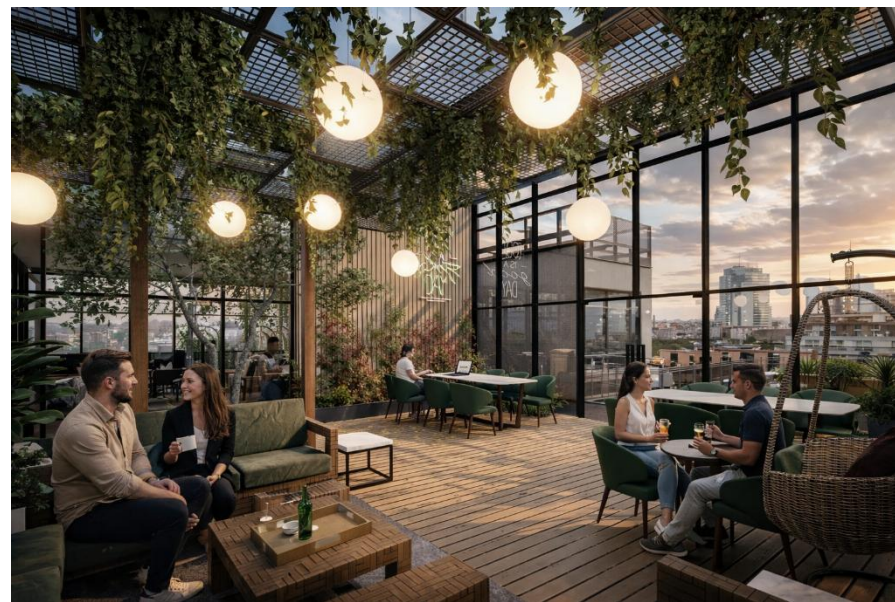
This business hub is designed as a contemporary workplace destination, combining efficiency with architectural presence. The composition is defined by two articulated office blocks connected by a central atrium, creating a transparent and inviting entrance. Large glazed façades maximize daylight and visual connectivity, while stone cladding adds solidity and permanence. Shaded terraces and open-air platforms enhance the work environment, supporting collaboration and flexibility. As a whole, the project represents a modern hub for innovation and enterprise.

CLIENT	AWQAF HESSA
LOCATION	RIYADH, AL-NARJIS
PROGRAM	OFFICES COMPLEX
AREA	1800 m ²
SCOPE OF WORK	DESIGN & SUPERVISION

RIYADH - KSA



POTFOLIO - 2026



RIYADH - KSA

16 BIN KRAIDES DRIVE THRU

CLIENT	BIN KRAIDES GROUP
LOCATION	RIYADH, AL-QADISIAH
PROGRAM	DRIVE THRU
AREA	2600 m ²
SCOPE OF WORK	DESIGN & SUPERVISION

SELECTED WORKS

POTFOLIO - 2026



RIYADH, KSA



This development reimagines the drive-thru concept with a modern, open design that integrates convenience, functionality, and style. The layout combines ground-floor restaurant units with outdoor seating and upper-level terraces, all unified under a bold canopy structure. Transparent façades ensure visibility and engagement, while landscaped edges soften the urban character. Designed for both pedestrian and vehicular access, the project creates a vibrant social and dining hub with efficient circulation and a contemporary architectural identity.

17 AL-MADINAH HUB

SELECTED WORKS

This development combines vibrant restaurants, a leisure club, and modern office spaces into an integrated destination. Designed with a linear masterplan, the complex promotes fluid pedestrian movement, landscaped plazas, and open terraces that encourage social interaction. The mix of functions ensures an active environment throughout the day and evening, reinforcing its role as a hub for work, dining, and recreation.

CLIENT	RAKAA
LOCATION	AL-MADINAH AL-MUNAWWARAH
PROGRAM	MIXED USE COMPLEX
AREA SCOPE OF WORK	33043 m ² DESIGN

RIYADH - KSA



POTFOLIO - 2026



RIYADH - KSA



18 ORO SQUARE

This development is envisioned as a lively urban destination combining retail, leisure, and entertainment. Anchored by a supermarket and cinema, the complex integrates restaurants and retail units around a central public plaza defined by landscaped walkways and water features.

CLIENT	AL-SEADAN REAL ESTATE
LOCATION	RIYADH, AL-NAMOUZAJYAH DISTRICT
PROGRAM	COMMERCIAL
AREA	35,000 m ²
SCOPE OF WORK	DESIGN & SUPERVISION

The building forms embrace the open space, creating a pedestrian-friendly environment that fosters social interaction. Modern Salmani façades with strong lines give the project a modern identity, while the spatial layout ensures visibility, accessibility, and vibrant day-to-night activity.

WORKS

POTFO





RIYADH - KSA



19 GHOSNA

CLIENT	SALEH AL-OBEID
LOCATION	RIYADH, AL-SAHAFA
PROGRAM	COMMERCIAL
AREA	12880 m ²
SCOPE OF WORK	DESIGN

This project creates a dynamic blend of dining and workspace environments. The design integrates modern office spaces with ground-level and terrace restaurants, offering both functionality and leisure. A central landscaped spine with water features enhances the pedestrian experience, encouraging social interaction and movement throughout the site.

The architectural rhythm of vertical fins and warm-toned façades reinforces a contemporary yet welcoming character, while the layout ensures seamless accessibility and visibility from the main roads.



ARKITECTONICA



SELECTED WORKS



RIYADH - KSA



POTFOLIO - 2026

ARKITECTONICA

20 KAYAN AVENUES

CLIENT AHMED AL-ZIAB
LOCATION AL-QASSIM, BURAIDAH
PROGRAM COMMERCIAL
AREA 13185 m²
SCOPE OF WORK DESIGN & SUPERVISION

SELECTED WORKS

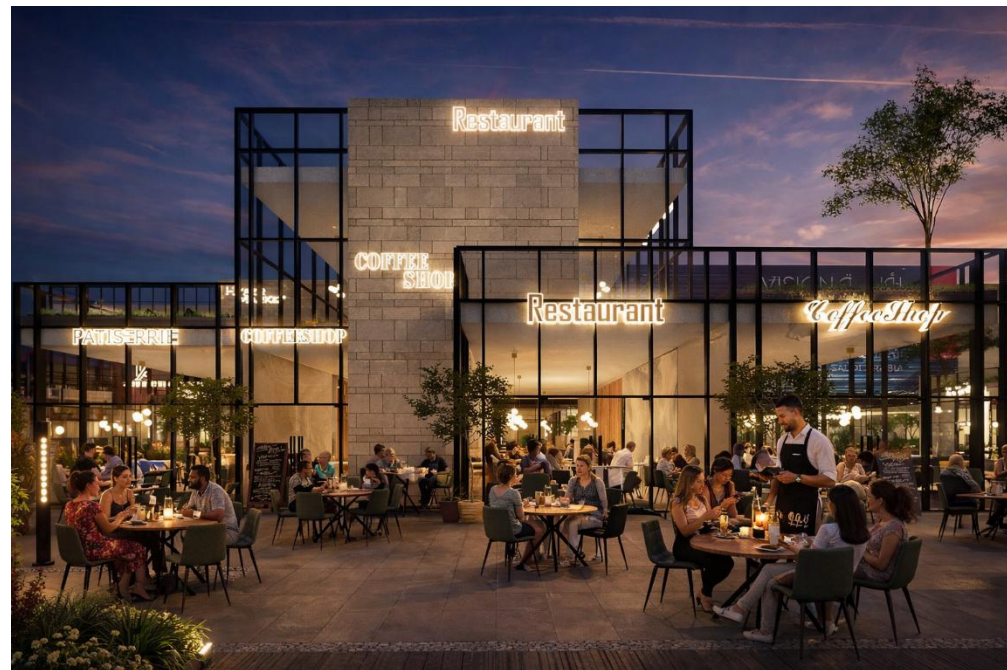
POTFOLIO - 2026



RIYADH - KSA



ARKITECTONICA



RIYADH - KSA



21 HAFER AL-BATIN PROJECTS



SELECTED WORKS

This development is conceived as an open-air retail and leisure destination, organized around pedestrian-friendly promenades and landscaped plazas. The design integrates shops, restaurants, and entertainment spaces in a modular layout that ensures flexibility and accessibility. Central courtyards with water features and public art create gathering spaces, enhancing the social and cultural experience. Contemporary façades with clean lines and integrated signage provide visibility while maintaining a cohesive architectural identity.

CLIENT QETAF GROUP
LOCATION HAFER AL-BATIN
PROGRAM MIXED USE COMPLEX
AREA 61046 m²
SCOPE OF WORK DESIGN

RIYADH - KSA



POTFOLIO - 2026

22 DANT AL-YASMEEN

CLIENT	TIRAZ AL-ARABIA
LOCATION	RIYADH, AL-YASMEEN
PROGRAM	RESIDENTIAL COMPLEX
AREA	5491 m ²
SCOPE OF WORK	DESIGN & SUPERVISION

This villa compound is designed as a contemporary residential community, where clean geometry and repetition create a harmonious rhythm. The façades are articulated with recessed frames that provide shade, privacy, and greenery integration, while a carefully selected palette of warm and vibrant accent colors gives each unit a unique identity within the overall composition.

The interplay of neutral base tones with bold highlights adds depth and character, enhancing the sense of individuality across the compound. Landscaped streets and generous setbacks further enrich the neighborhood, creating a modern and livable community.



23 ANAN HOTEL

Anan Hotel is a contemporary high-rise development located in Al Sahafa, Riyadh, Saudi Arabia, developed for Fahad Al Suwailem. The project is designed as a refined vertical landmark with a sleek glass façade and a distinctive patterned central element that gives the tower a strong architectural identity. With a total built-up area of 1,050 m² and a height of 16 floors, the development accommodates 20 residential apartments, offering an exclusive and compact urban living environment. Its modern expression and efficient residential program make it a notable addition to Riyadh's evolving architectural landscape.

SELECTED WORKS

CLIENT	FAHAD AL SUWAILEM
LOCATION	RIYADH, AL SAHAFA
PROGRAM	RESIDENTIAL
AREA	1050 m ²
SCOPE-OF WORK	DESIGN & SUPERVISION

RIYADH - KSA

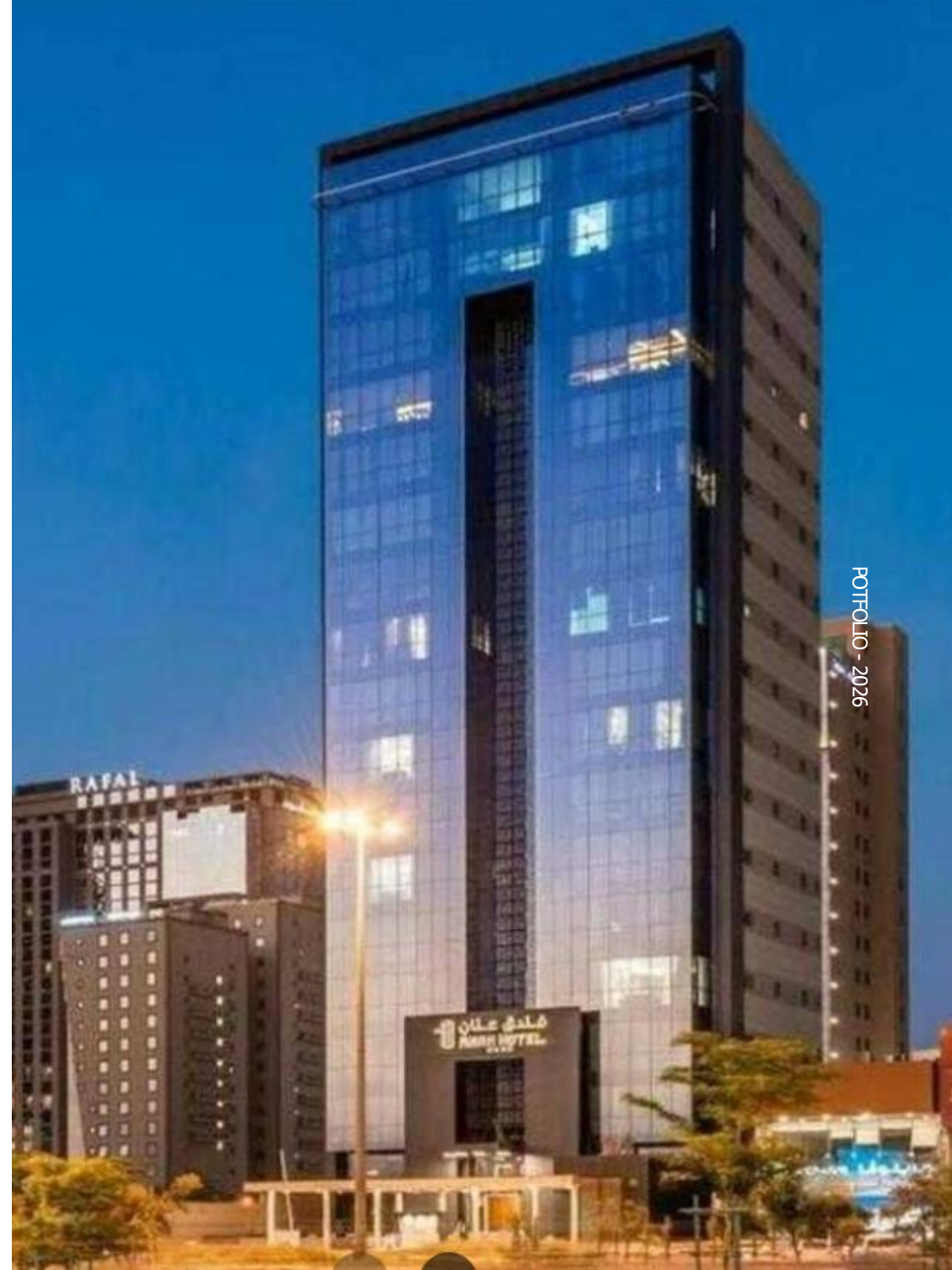


PORTFOLIO - 2026



ARKITECTONICA

RIYADH - KSA



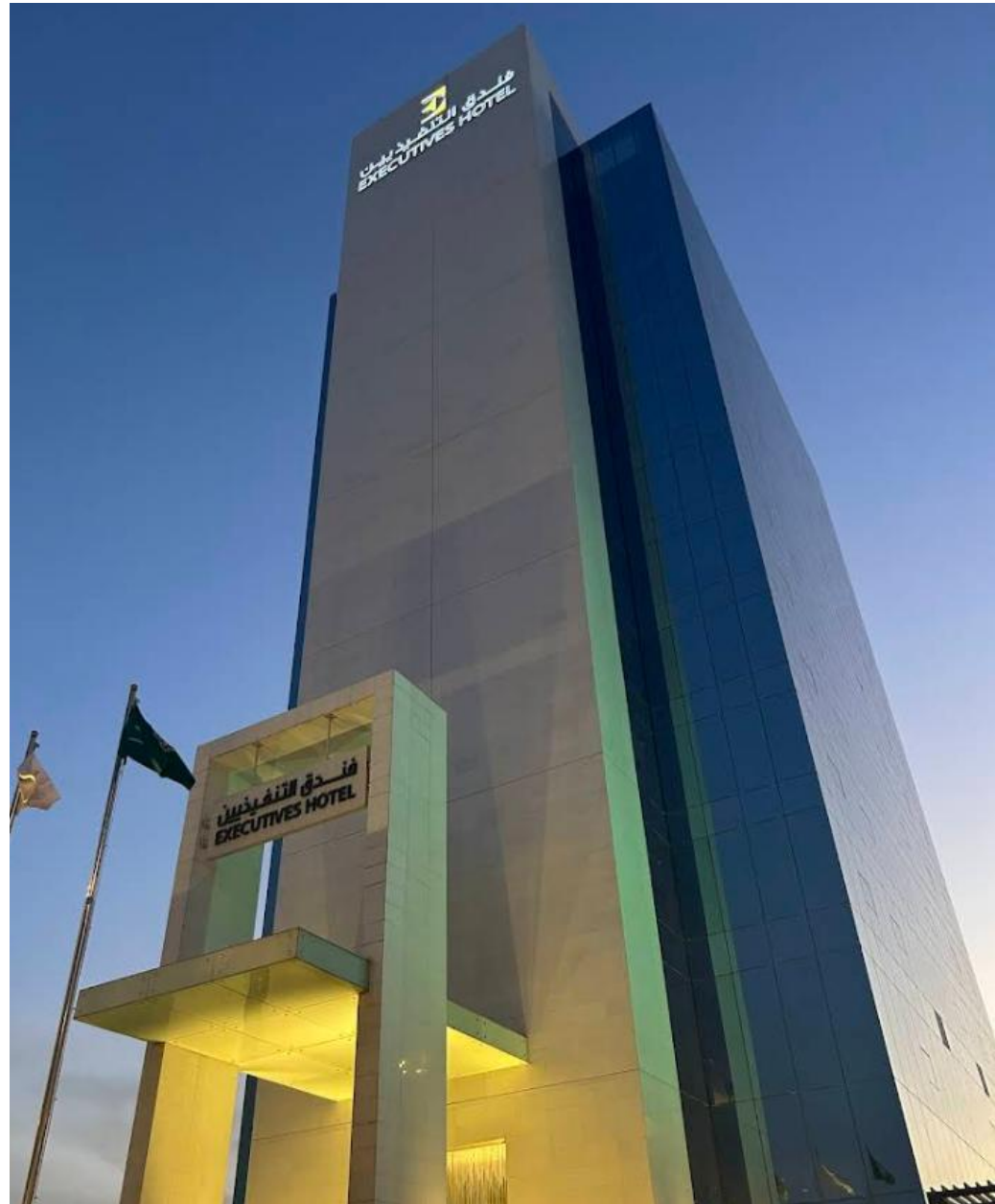
24 EXECUTIVES HOTEL

Executives Hotel is a contemporary hospitality development located in Al Aqiq, Riyadh, Saudi Arabia, developed for Abd Al Aziz Al Ekresh. Designed as a modern urban hotel, the project features a clean architectural expression defined by a strong vertical composition, a central solid mass, and glazed side elevations that give the building a refined and recognizable identity. With a total built-up area of 2,245 m² and a height of 17 floors, the development accommodates 136 hotel rooms, offering a well-structured hospitality program in one of Riyadh's prominent districts. Its elegant form and functional layout position it as a distinctive hospitality destination within the city's urban fabric.

CLIENT	ABD AL AZIZ AL EKRESH
LOCATION	RIYADH, AL AQIQ
PROGRAM	HOTEL
AREA	2,245 m ²
SCOPE-OF WORK	DESIGN & SUPERVISION

RIYADH - KSA





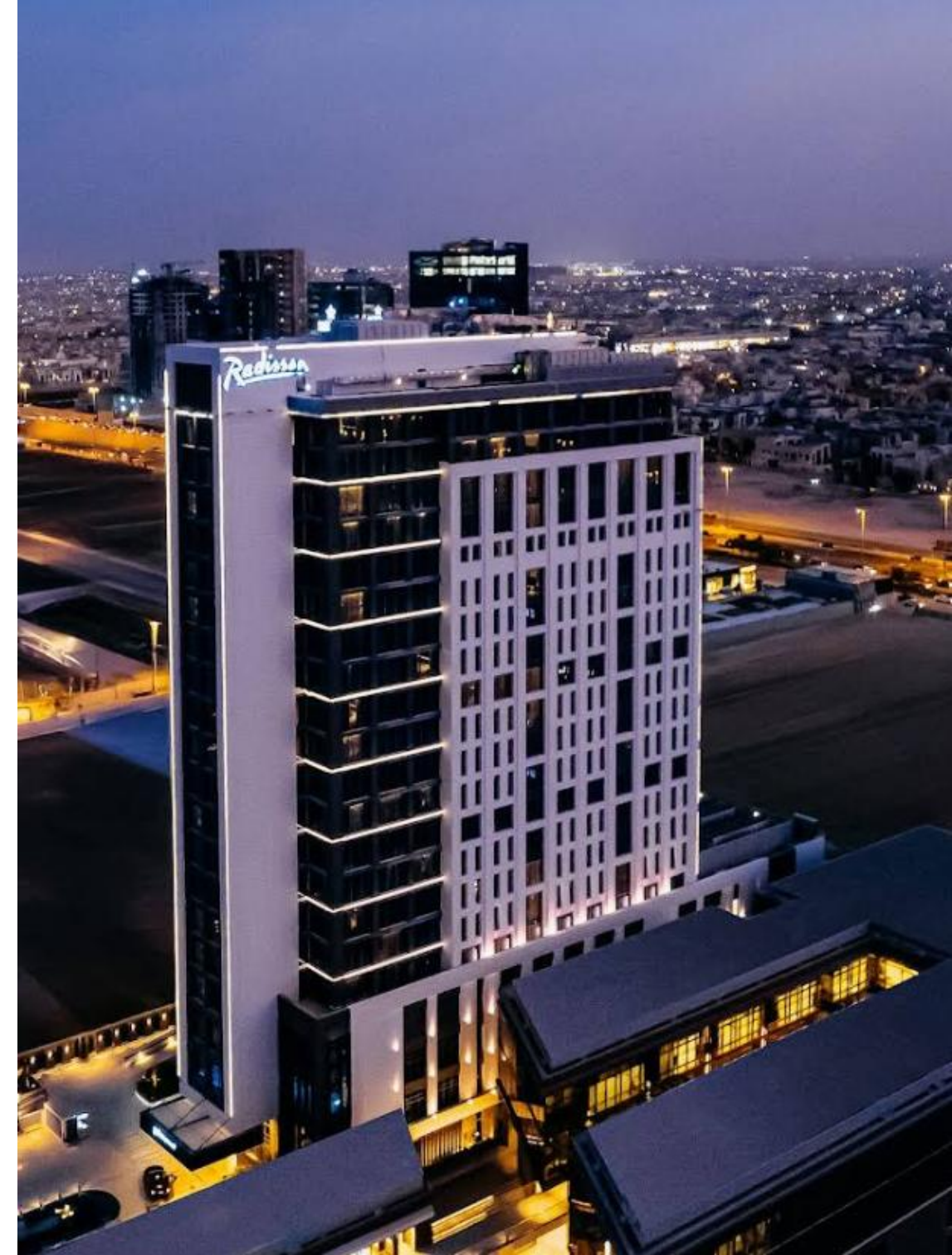
RIYADH - KSA



25 EXECUTIVES HOTEL Radisson Hotel

Executives Hotel Radisson Hotel is a contemporary hospitality development located in Riyadh, Saudi Arabia, developed for Abd Al Aziz Al Ekresh. Designed as a modern urban hotel, the project features a refined architectural expression with a strong vertical composition, clean façade lines, and a contemporary massing that gives the building a recognizable identity within the city skyline. With a total built-up area of 2,245 m² and a height of 17 floors, the development accommodates 136 hotel rooms, offering a well-organized hospitality program tailored to high-quality urban accommodation. Its elegant form, efficient planning, and premium hotel branding position it as a distinctive destination in Riyadh's hospitality sector. destination within the city's urban fabric.

CLIENT	ABD AL AZIZ AL EKRESH
LOCATION	RIYADH, AL SAHAFA
PROGRAM	HOTEL
SCOPE-OF WORK	DESIGN & SUPERVISION



ARKITECTONICA

SELECTED WORKS



RIYADH - KSA



PORTFOLIO - 2026

26 HADB HOTEL

Hadb Hotel is a contemporary hospitality project located in Al Aqiq District, Riyadh, Saudi Arabia. Developed for Abdallah Al Jomaih, the project is designed as a modern hotel tower with a sleek architectural expression and a strong vertical presence within the city skyline. The development has a total built-up area of 1,750 m² and rises to 25 floors, accommodating 80 hotel rooms and 15 serviced apartments. With its compact footprint, elegant façade, and mixed hospitality offering, the project presents a refined urban destination that responds to the growing demand for high-quality accommodation in Riyadh.

CLIENT	ABDALLAH AL JOMAIH
LOCATION	RIYADH, AL AQIQ
PROGRAM	HOTEL
AREA	1,750 m ²
SCOPE-OF WORK	DESIGN & SUPERVISION

RIYADH - KSA





ARKITECTONICA



RIYADH - KSA



27 MALATHEK TOWERS

This twin-tower development is designed as a dynamic dialogue between residential living and corporate efficiency. The slender residential tower rises with vertical elegance, articulated by alternating glazed and opaque bands that enhance rhythm and transparency. In contrast, the broader office tower emphasizes horizontality, integrating shading devices and a strong structural frame to support flexible workspaces.

Together, the towers form a unified composition through their shared glass language and modern design vocabulary, while their distinct proportions clearly express their different functions. The development stands as a landmark of contemporary mixed-use architecture, balancing urban lifestyle with professional environments.

CLIENT	MALATHEIK INVESTMENT CO.
LOCATION	RIYADH
PROGRAM	RESIDENTIAL APARTMENTS & OFFICES
AREA	10356 m ²
SCOPE OF WORK	DESIGN & SUPERVISION

RIYADH - KSA



28 SABB BANK

SELECTED WORKS

This bank building is designed as a landmark of stability and innovation. A bold stone frame conveys strength and permanence, while diamond-patterned glass façades express transparency and modernity. The central cut-out brings natural light deep into the interior and creates a distinctive identity that reflects the bank's values of trust, security, and accessibility.

CLIENT	SAUDI BRITISH BANK
LOCATION	JEDDAH, ALSHATEA DISTRICT
PROGRAM	BANK
AREA	6765 m ²
SCOPE OF WORK	DESIGN

RIYADH - KSA



POTFOLIO - 2026

ARKITECTONICA

SUPERVISION WORKS

EXECUTION & SUPERVISION

POTFOLIO - 2026

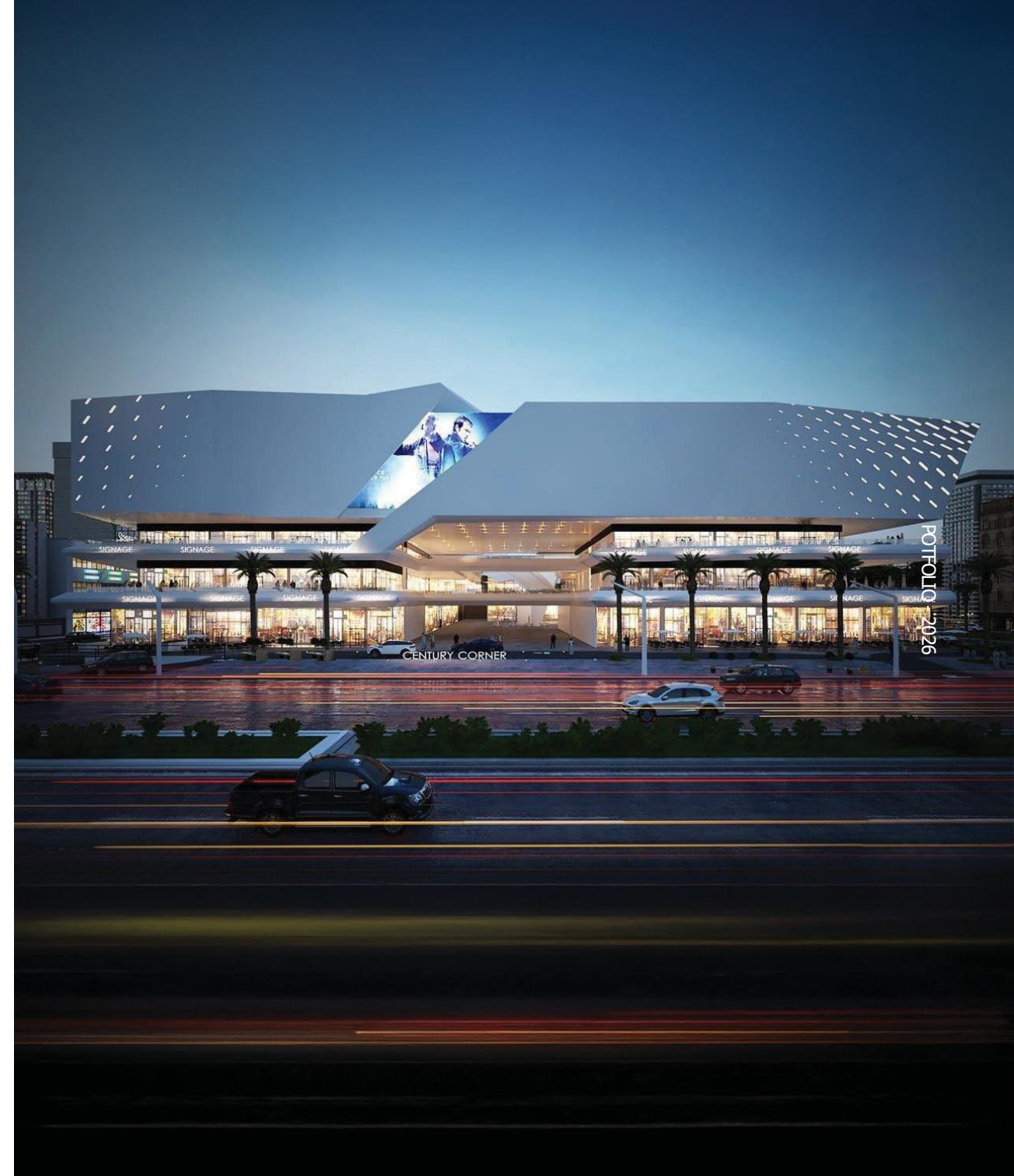
RIYADH - KSA

01 CENTURY CORNER

SUPERVISION WORKS

CLIENT	RAKAA HOLDING
LOCATION	RIYADH, KING FAHD ROAD
PROGRAM	MIXED USE COMPLEX
AREA	14912 m ²
SCOPE OF WORK	DESIGN & SUPERVISION

RIYADH - KSA



POTFOLIO 2026

ARKITECTONICA



SUPERVISION WORKS

POTFOLIO - 2026

RIYADH - KSA

02 JOY AVENUE

SUPERVISION WORKS

CLIENT AL-MUTLAQ GROUP
LOCATION RIYADH, AL-SAADAH
PROGRAM MIXED USE COMPLEX
AREA 38027 m²
SCOPE OF WORK DESIGN& SUPERVISION

RIYADH - KSA



PORTFOLIO - 2026



ARKITECTONICA

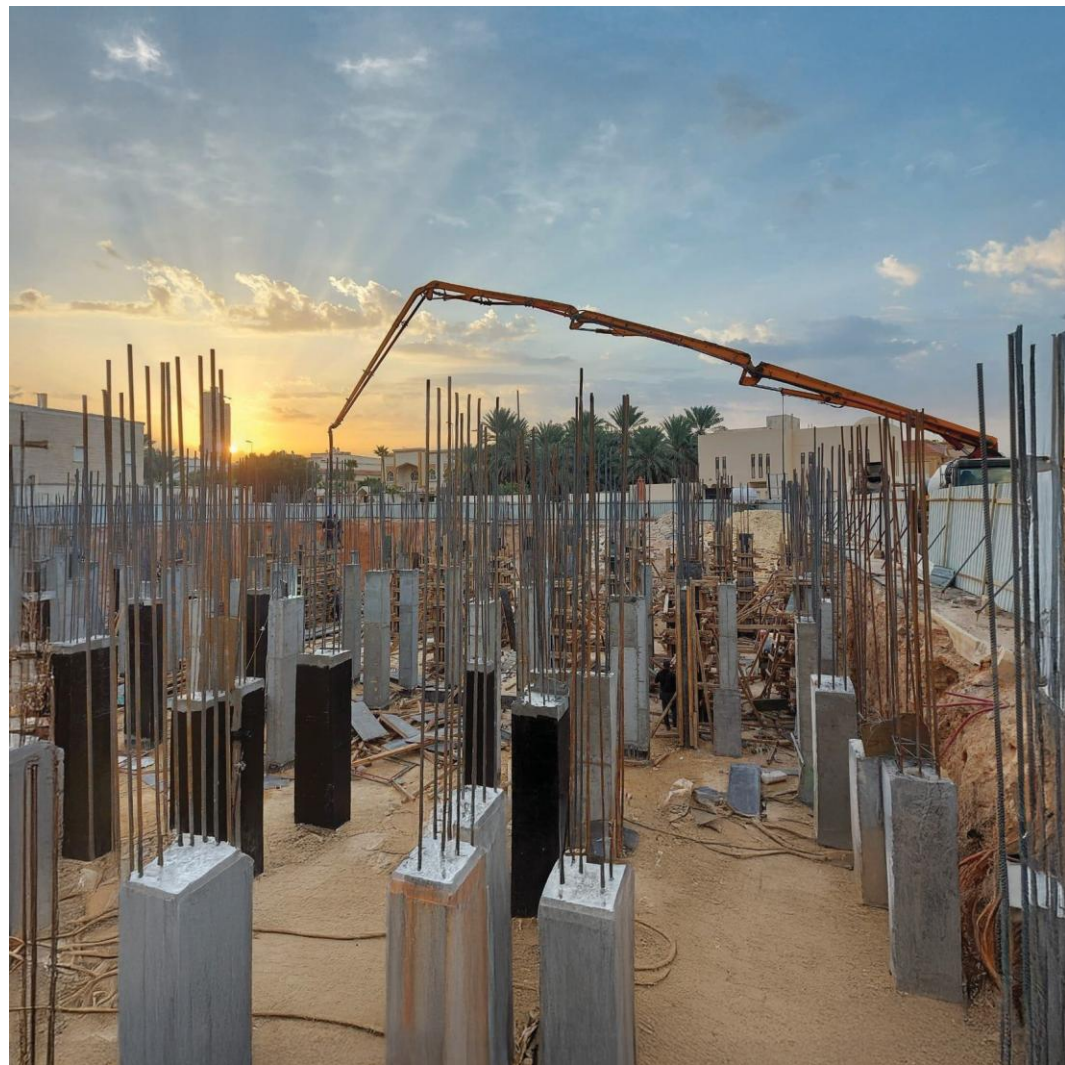
03 OLAYA VILLAS

SUPERVISION WORKS

CLIENT MARWAN REAL ESTATE CO.
LOCATION RIYADH, AL-OLAYA DISTRICT
PROGRAM RESIDENTIAL COMPLEX, 16 VILLAS

RIYADH - KSA





04 LA PERLE

SUPERVISION WORKS

CLIENT FIRST AVENUE REAL ESTATE DEVELOPMENT
LOCATION RIYADH, AL-NAKHEEL DISTRICT
PROGRAM RESIDENTIAL COMPLEX
AREA 3300 m²
SCOPE OF WORK SUPERVISION

RIYADH - KSA



POTFOLIO - 2025



05 RIYADH ICON

CLIENT	AL-ALIAN ICON
LOCATION	RIYADH, ANAS IBN MALIK ST.
PROGRAM	COMMERCIAL
AREA	16114 m ²
SCOPE OF WORK	SUPERVISION & ISSUANCE OF A BUILDING PERMIT





06 LA PERLE

SUPERVISION WORKS

CLIENT AL-JADA AL-OULA
LOCATION JEDDAH, KSA
PROGRAM MIXED USE COMPLEX
SCOPE OF WORK SUPERVISION

RIYADH - KSA



POTFOLIO - 2026

ARKITECTONICA



SUPERVISION WORKS



RIYADH - KSA

07 KAYAN AVENUES

CLIENT AHMED AL-ZIAB
LOCATION AL-QASSIM, BURAIDAH
PROGRAM COMMERCIAL
AREA 13185 m²
SCOPE OF WORK DESIGN & SUPERVISION

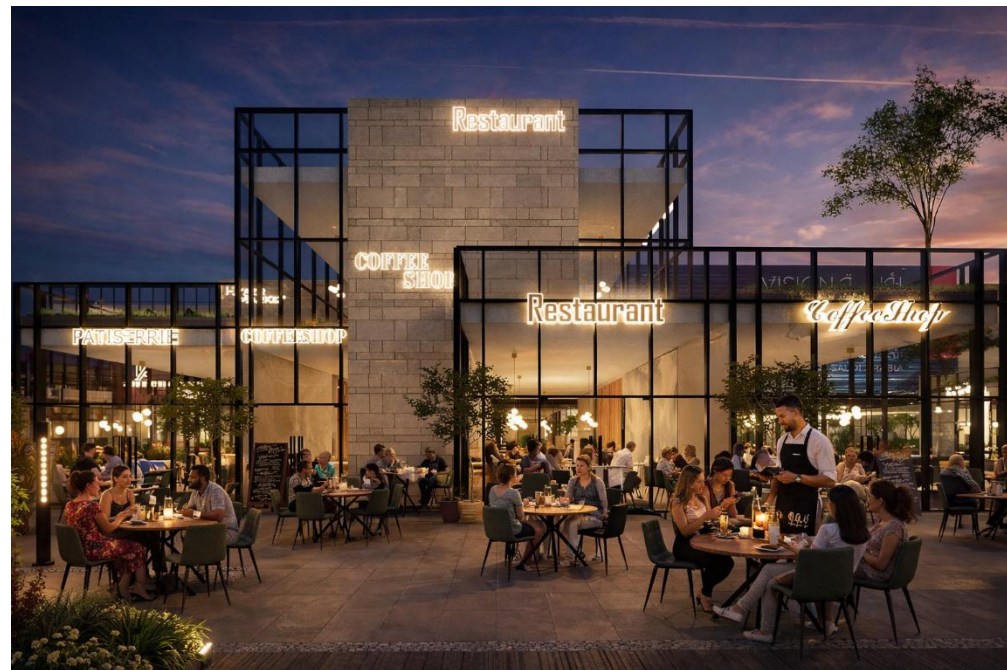
SUPERVISION WORKS

POTFOLIO - 2026





ARKITECTONICA



RIYADH - KSA



08 GHOSNA

CLIENT SALEH AL-OBEID
LOCATION RIYADH, AL-SAHAFI
PROGRAM COMMERCIAL
AREA 12880 m²
SCOPE OF WORK DESIGN & SUPERVISION





09 MASHARIF HILLS - B11

SUPERVISION WORKS

CLIENT KINAN
LOCATION RIYADH, AL-NARJIS DISTRICT
PROGRAM RESIDENTIAL COMPLEX
AREA 12880 m²
SCOPE OF WORK DESIGN & SUPERVISION

RIYADH - KSA



POTFOLIO - 2026



10 ORO SQUARE

SUPERVISION WORKS

CLIENT AL-SEADAN REAL ESTATE
LOCATION RIYADH, AL-NAMOUZAJYAH DISTRICT
PROGRAM COMMERCIAL
AREA 35,000 m²
SCOPE OF WORK DESIGN & SUPERVISION

RIYADH - KSA



POTFOLIO - 2026



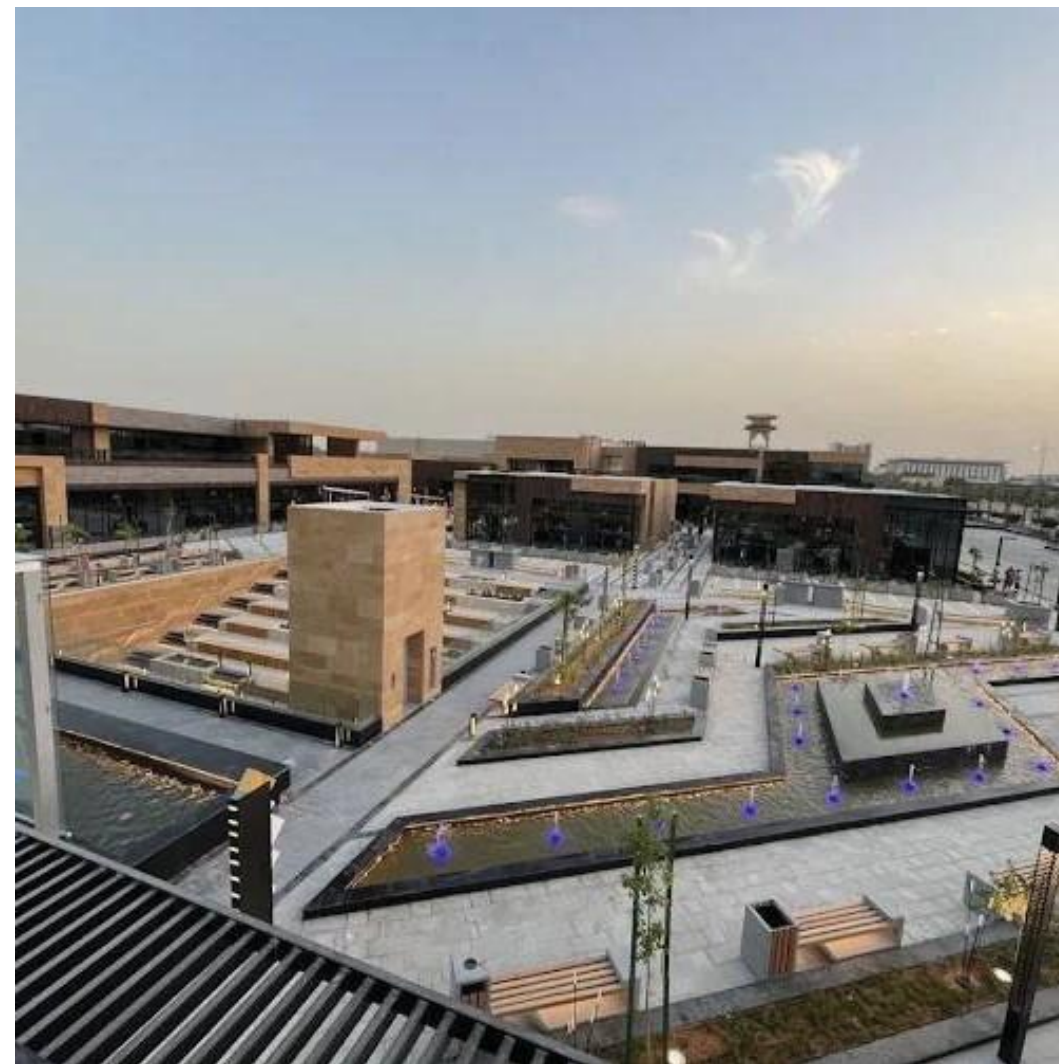
ARKITECTONICA



RIYADH - KSA



ARKITECTONICA



RIYADH - KSA

11 ABO BAKER BUSINESS GATE

SUPERVISION WORKS

CLIENT TALAE AL NUMU
LOCATION RIYADH, AL-NARJIS
PROGRAM MIXED USE COMPLEX
AREA 2363 m²
SCOPE OF WORK DESIGN & SUPERVISION

RIYADH - KSA





ARKITECTONICA



RIYADH - KSA

12 PALMERA

SUPERVISION WORKS

CLIENT HAMAD SAEDAN CO., THARAWAT AL-NAKHLA
LOCATION RIYADH, AL-SULAYMANIAH
PROGRAM MIXED USE COMPLEX
AREA 16000 m²
SCOPE OF WORK SUPERVISION

RIYADH - KSA



POTFOLIO - 2026



ARKITECTONICA



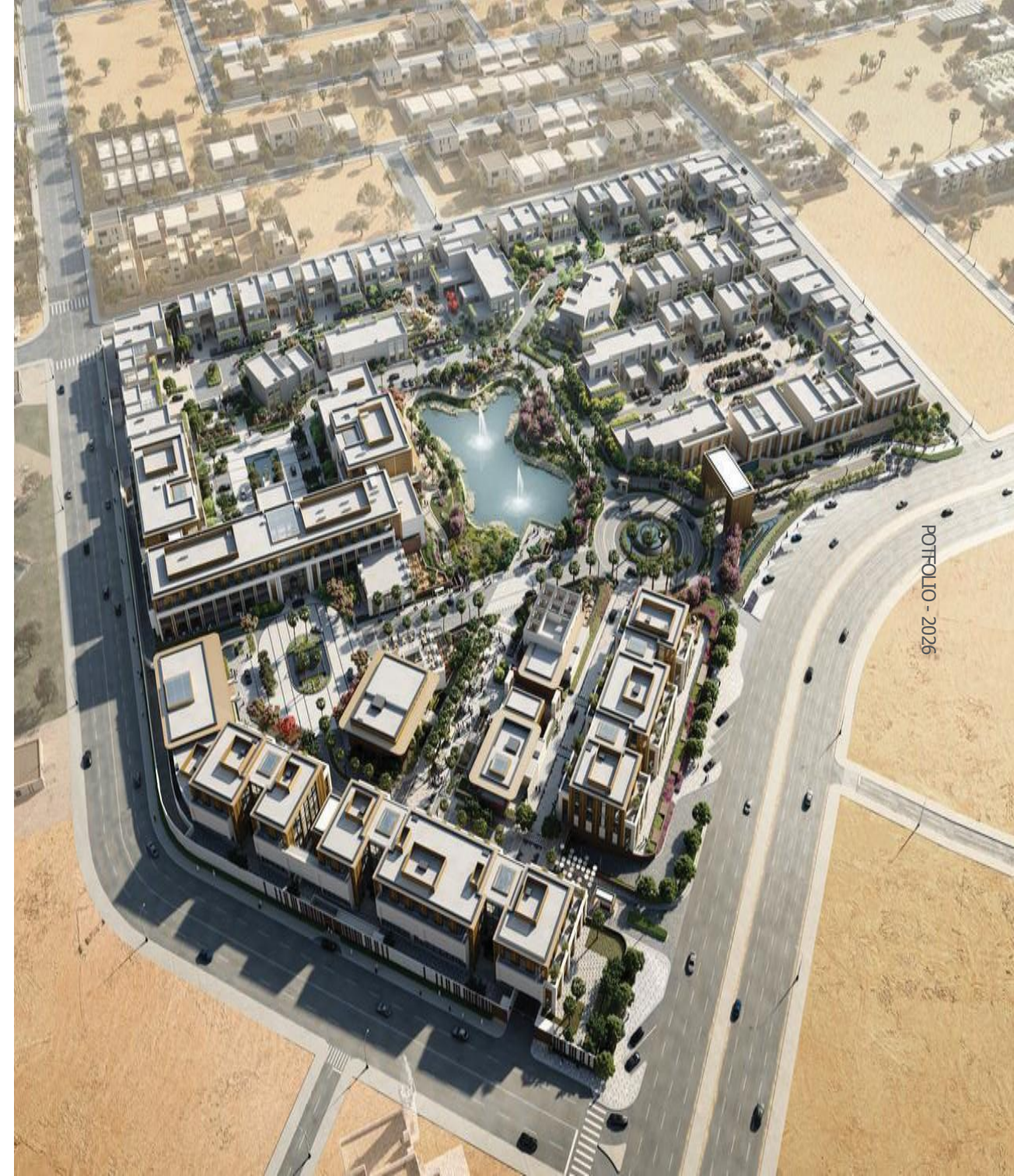
ARKITECTONICA

13 OUD RESERVE

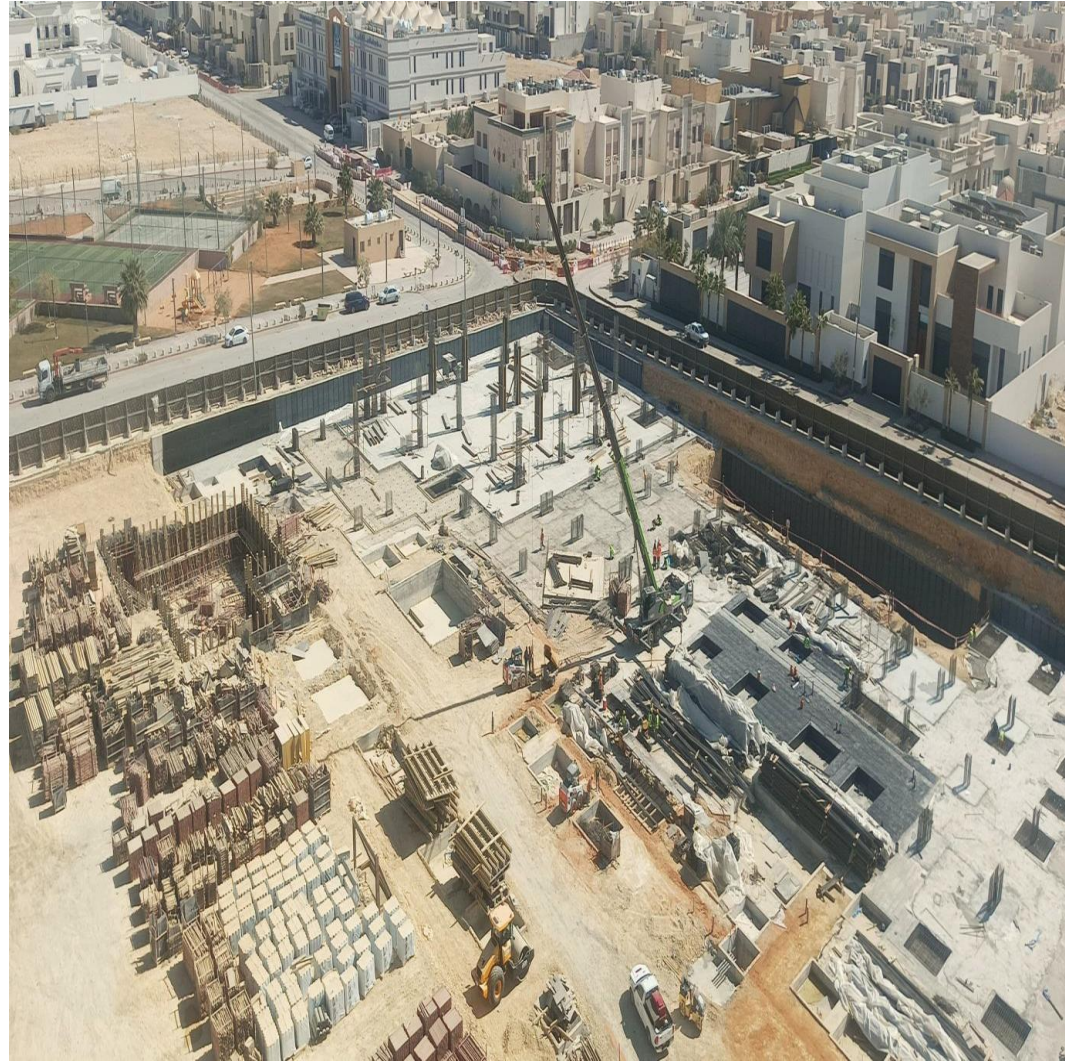
SUPERVISION WORKS

CLIENT OUD
LOCATION RIYADH, AL-QIRAWAN
PROGRAM MIXED USE COMPLEX
AREA 48,000 m²
SCOPE OF WORK SUPERVISION

RIYADH - KSA



POTFOLIO - 2026



14 MAKANH TOWER

SELECTED WORKS

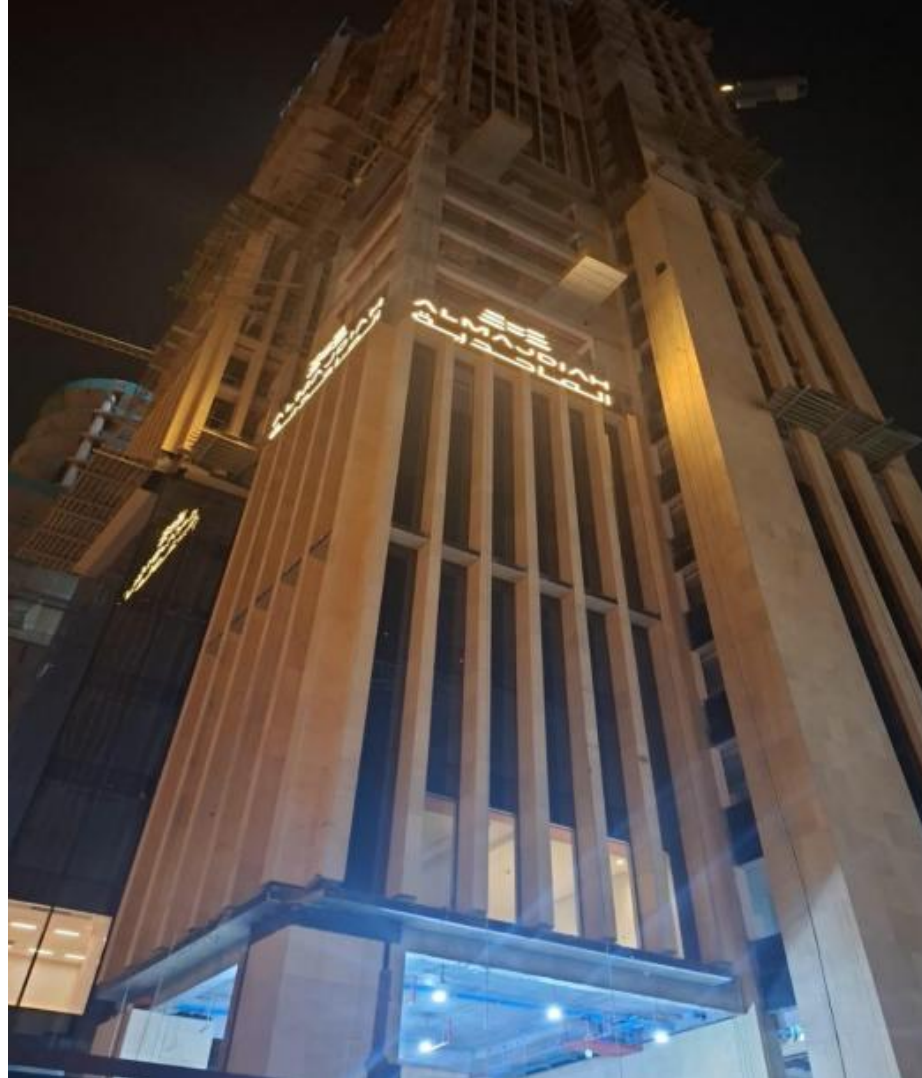
CLIENT	AL MAJDIAH RESIDENCE
LOCATION	RIYADH, AL NAKHEEL
PROGRAM	RESIDENTIAL DEVELOPMENT
AREA	2703 m ²
SCOPE-OF WORK	SUPERVISION

RIYADH - KSA

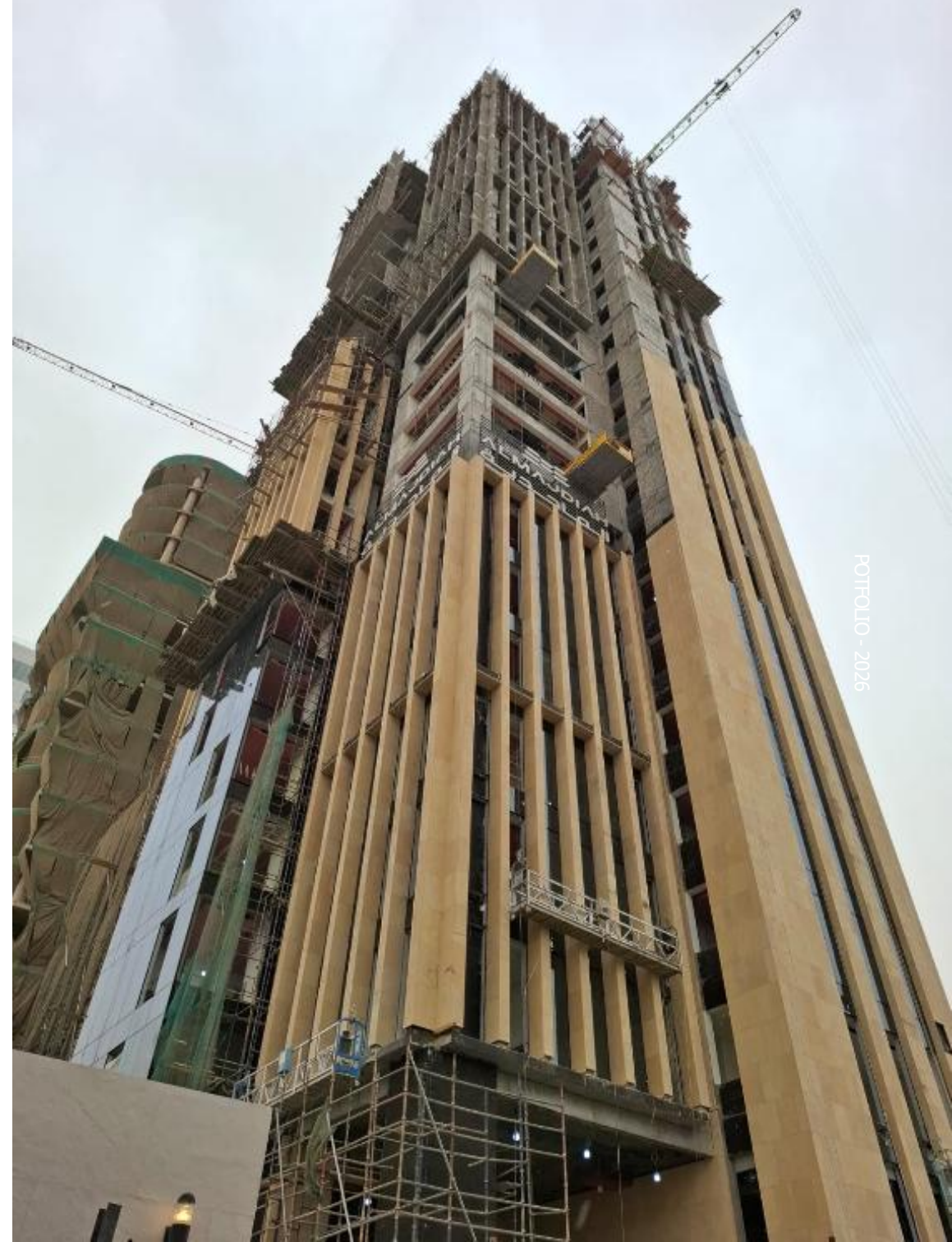


ARKITECTONICA

SELECTED WORKS



RIYADH - KSA



PORTFOLIO - 2026

ARKITECTONICA

15 QARAR TOWER

SELECTED WORKS

CLIENT	AL-MAJEDIA
LOCATION	RIYADH
PROGRAM	OFFICES
AREA	4,187.50 m ²
SCOPE-OF WORK	SUPERVISION

RIYADH - KSA



POTFOLIO - 2026



ARKITECTONICA



SELECTED WORKS

RIYADH - KSA

16 OUD Al Abnaa Office Park

SUPERVISION WORKS

CLIENT OUD
LOCATION RIYADH, King Khalid Road
PROGRAM MIXED USE COMPLEX
AREA 34,394.94 m²
SCOPE OF WORK SUPERVISION



POTFOLIO - 2026

17 AL MAJEDIA 178

SUPERVISION WORKS

CLIENT AL-MAJEDIA
LOCATION RIYADH
PROGRAM RESIDENTIAL COMPLEX
SCOPE OF WORK SUPERVISION

RIYADH - KSA



POTFOLIO - 2026

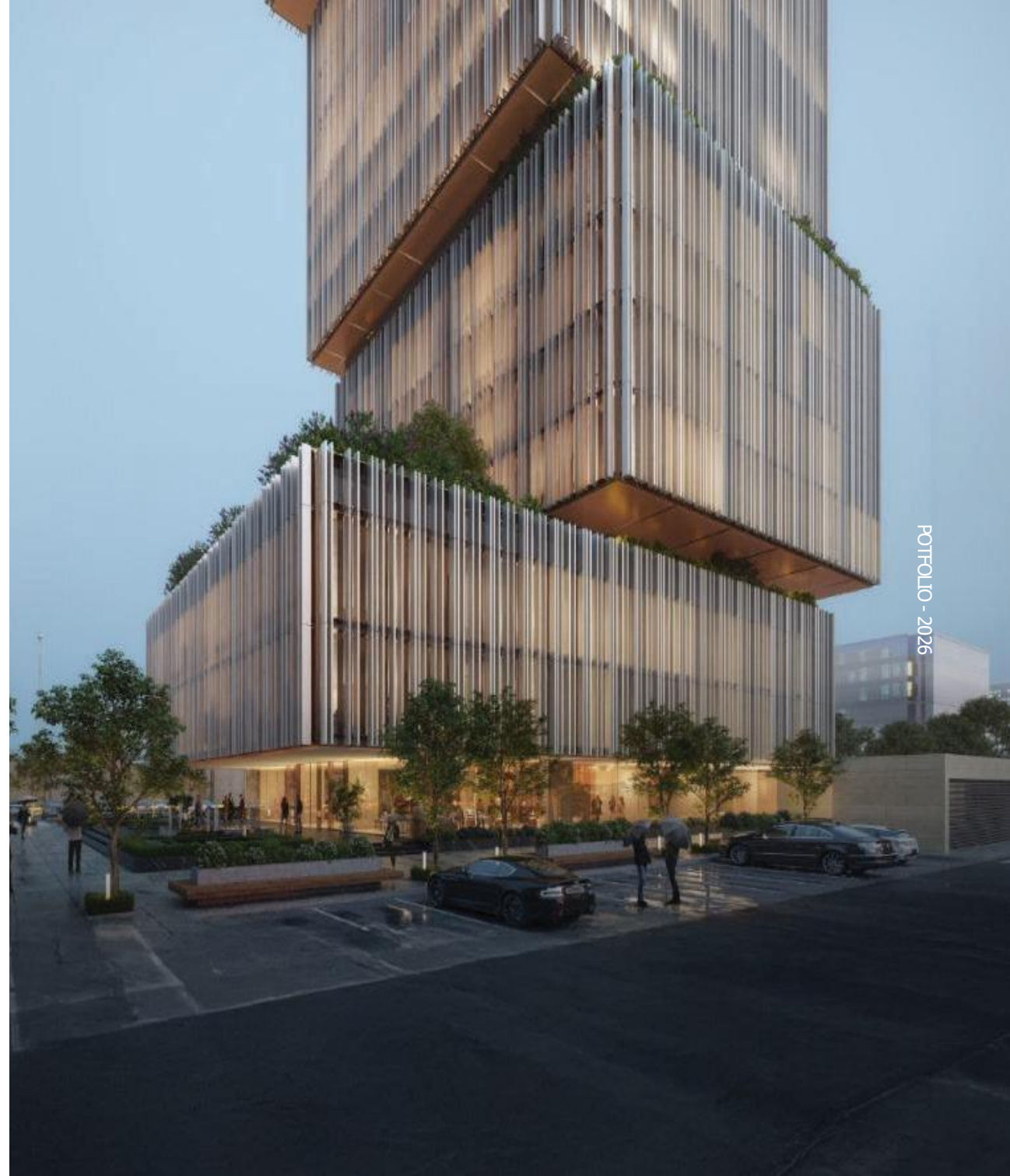
ARKITECTONICA

18 AL-RESAYES TOWER

SUPERVISION WORKS

CLIENT SULTAN AL-RESAYES REAL ESTATE
LOCATION RIYADH, AL-SAHAFI DISTRICT
PROGRAM MIXED USE COMPLEX
SCOPE OF WORK SUPERVISION

RIYADH - KSA



POTFOLIO - 2026

18 HAYAT MALL RENOVATION

SUPERVISION WORKS

CLIENT HAYAT MALL
LOCATION RIYADH, KING FAHD DISTRICT
PROGRAM MALL
SCOPE OF WORK SUPERVISION

RIYADH - KSA



POTFOLIO - 2026

19 QOUDS SOCIAL CLUB

CLIENT	LEEJAM
LOCATION	RIYADH, QOUDS DISTRICT
PROGRAM	MIXED USE
AREA	18700 m ²
SCOPE OF WORK	ISSUANCE OF A BUILDING PERMIT

This project integrates dining and fitness within a unified architectural composition. The ground floor accommodates a series of restaurants with direct street access, activating the frontage and creating a lively atmosphere.

Above, the club and fitness facilities occupy expansive volumes, marked by bold geometric forms and large glazed openings that emphasize openness and energy. The design balances practicality with a strong urban presence, positioning the complex as both a social and recreational hub.

SELECTED WORKS

POTFOLIO - 2026



RIYADH - KSA

ARKITECTONICA

20 RAFAL TOWER ASCOTT

SELECTED WORKS

CLIENT	RAFAL REAL ESTATE
LOCATION	RIYADH, AL-SAHAFA
PROGRAM	HOTEL
AREA	10,957 M ²
SCOPE-OF WORK	DESIGN REVIEW & AOR

RIYADH - KSA



POTFOLIO - 2026

ARKITECTONICA

21 RAFAL TOWER marriott

SELECTED WORKS

CLIENT	RAFAL REAL ESTATE
LOCATION	RIYADH, AL-SAHAFA
PROGRAM	HOTEL
AREA	19,336 M ²
SCOPE-OF WORK	DESIGN REVIEW & AOR

RIYADH - KSA



POTFOLIO - 2026

ARKITECTONICA

22 CALMA

SELECTED WORKS

CLIENT	CALMA REAL ESTATE
LOCATION	RIYADH, KING SALMAN ROAD
PROGRAM	MIXED USE COMPLEX
AREA	2250 m ²
SCOPE-OF WORK	SUPERVISION

RIYADH - KSA



POTFOLIO - 2026

23 JADA TOWER

SELECTED WORKS





8148 KING FAHD BRANCH RD
AL MALQA
RIYADH 13521
KINGDOM OF SAUDI ARABIA

TEL +966-11-2003213
EMAIL info@arkitectonica.org